

The Good Deeds Dress

A Pdf Sewing Pattern from

Fabrics

1/2yd -2 1/2 yds medium weight cotton or cotton blend fabrics. The bodice is not lined so you will want to avoid sheer or lighter weight fabrics.

Notions

1-2 packages of double fold bias tape
I recommend using 1/4" double fold bias tape especially for the smaller sizes however extra wide may be used as well.

Machines

This skirt can be sewn entirely on a basic sewing machine. A serger may also be used for seams. A straight stitch is required for topstitching.

Cutting list

Bodice Front ~ cut 2 pieces in opposite directions or mirror images. Be sure to cut them so that the right sides of your fabric will face out when putting them together.

Bodice Back ~ cut 1 on the fold.

Skirt ~ cut 1 rectangle of fabric using the measurements specified in the skirt dimensions chart for your size. Alternately you may also cut 2 separate pieces using half the given measurement and seam them together on each side.

Seam Allowance

1/4" seam allowance is included on all pattern pieces.
A 1 1/2" Hem allowance is included in the skirt measurements.



Aproximate Finished Measurements		
Size	Chest	Length
12m	21"	15.25"
18m	22"	16.25"
2	23"	18"
3	24"	19.25"
4	25"	21.75"
5	26"	23"
6	27.25"	24.5"
7	28"	25.5"
8	29.25"	27.25"
9	30"	28"
10	31.75"	29"
12	33.5"	30.5"
14	34.75"	32.25"

Printing and assembling your pattern

When printing you will want to turn scaling and/or auto rotate OFF.

After printing out your pattern you will match each page together using the dots printed on the pages. Each page is also labeled either front or back to avoid confusion. An example of what your pattern should look like once you have assembled all the pages is included at the end of the instruction pages.

SweetElysium@gmail.com

www.etsy.com/shop/ElysiumPatterns www.facebook.com/ElysiumPatterns

Tracing and Cutting

Be sure when cutting your pattern pieces out that you cut them as mirror images as shown in the picture to the right. This will ensure that when you place your pieces together the right sides will both be facing out. The back bodice should be cut as one piece on the fold of your fabric.



Sew the bodice together at the shoulders

Unfold the bodice back and press. Place both front bodice pieces on top of the back bodice with the right sides facing. Match the pieces together at the shoulders and seam together using a $\frac{1}{4}$ " seam allowance.



Attaching the bias tape

Unfold the bodice and lay flat. Begin attaching the bias tape along the neckline starting from one side of the front cross piece along the neck to the other side of the front bodice. Fold the bias tape over the raw edges and stitch along the length with a straight stitch. The seam allowance you use here will depend upon the size of bias tape you have chosen for your project.

Attach bias tape in the same manner along both of the arm holes as well.



Sewing the sides of the bodice

Place the front bodice pieces across each other with the right sides facing the right side of the back bodice. Match them up along the sides and bottom as shown. Please note that one edge of the front bodice (the side without the shoulder strap) will not line up along the top with the other two pieces along the top. It will be about $\frac{1}{4}$ " below the underarm when the bottoms of all of the pieces are lined up correctly. This is to help minimize bulk in the side seam. Stitch each side together using a $\frac{1}{4}$ " seam allowance. I suggest Reinforcing the side seam with a extra line of stitching at the underarm for extra durability.

Cutting and assembling the skirt

For simplicity's sake and to save time, tape and ink I have not included a pattern piece for the skirt section of this dress. You will simply need to cut out a large rectangle of fabric using the dimensions provided in the skirt dimensions chart. Depending on the size of dress you are making and the length of the cut of fabric that you are using you will either cut one continuous piece of fabric and seam it together along the short side or you will need to divide the *longer* measurement in half and cut two pieces of fabric. You will then seam those together on each side using a $\frac{1}{4}$ " seam allowance.

Once you have sewn your skirt pieces together you will hem the bottom edge using a 1 $\frac{1}{2}$ " hem allowance and your preferred method of hemming.

Gather and attach the skirt

Sew along the top circumference of the skirt using a long basting stitch and a $\frac{1}{4}$ " seam allowance. Repeat with another line of long basting stitches using a $\frac{1}{2}$ " seam allowance.

Next you will begin gathering the skirt. Using the bottom threads from both lines of basting stitches; gather up the width of your skirt so that it matches the circumference of the bottom of the bodice.

Once you have gathered the skirt to the appropriate circumference place the bodice inside the skirt with the right sides and raw edges facing. Be sure to line up the side seams of the bodice with the side seams on your skirt piece. Adjust the fullness as necessary. Seam the skirt to the bodice using a $\frac{1}{2}$ " seam allowance.



Skirt cutting measurements	
Size	Dimensions
12m	11.5" x 36"
18m	12.5" x 38"
2	14" x 40"
3	15" x 42"
4	17.25" x 44"
5	18.25" x 46"
6	19.25" x 48"
7	20.5" x 50"
8	21.5" x 52"
9	22" x 54"
10	22.5" x 56"
12	23.75" x 60"
14	25" x 62"



Topstitch along the skirt

Remove your basting stitches and press the seam up towards the bodice. Top stitch along the bottom of the bodice where it meets the gathered skirt.

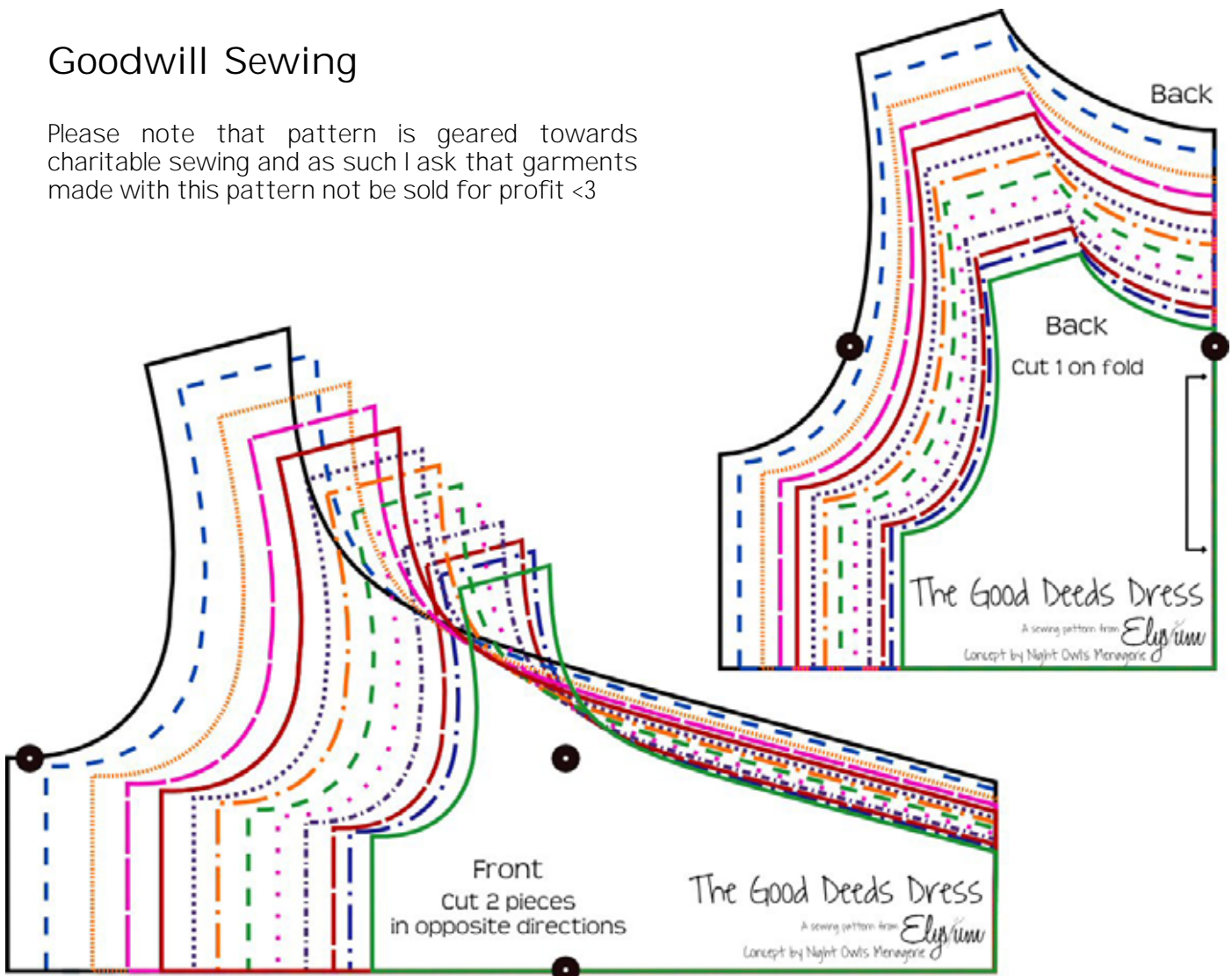
Embellishments

This pattern was created to be a fast and simple charity sewing project. You may however want to add a few more details or a little more frill. Although I have not included instructions in this tutorial you may have noticed that I have added an extra ruffle to the bottom of dress in the example picture here. Cute little pockets may also be added as well as a sash or coordinating trim along the bottom of the bodice. There are also several different options you could utilize for the skirt. Keep an eye on my blog as I will be posting a few different ideas and tutorials on ways to embellish this simple sewing pattern.



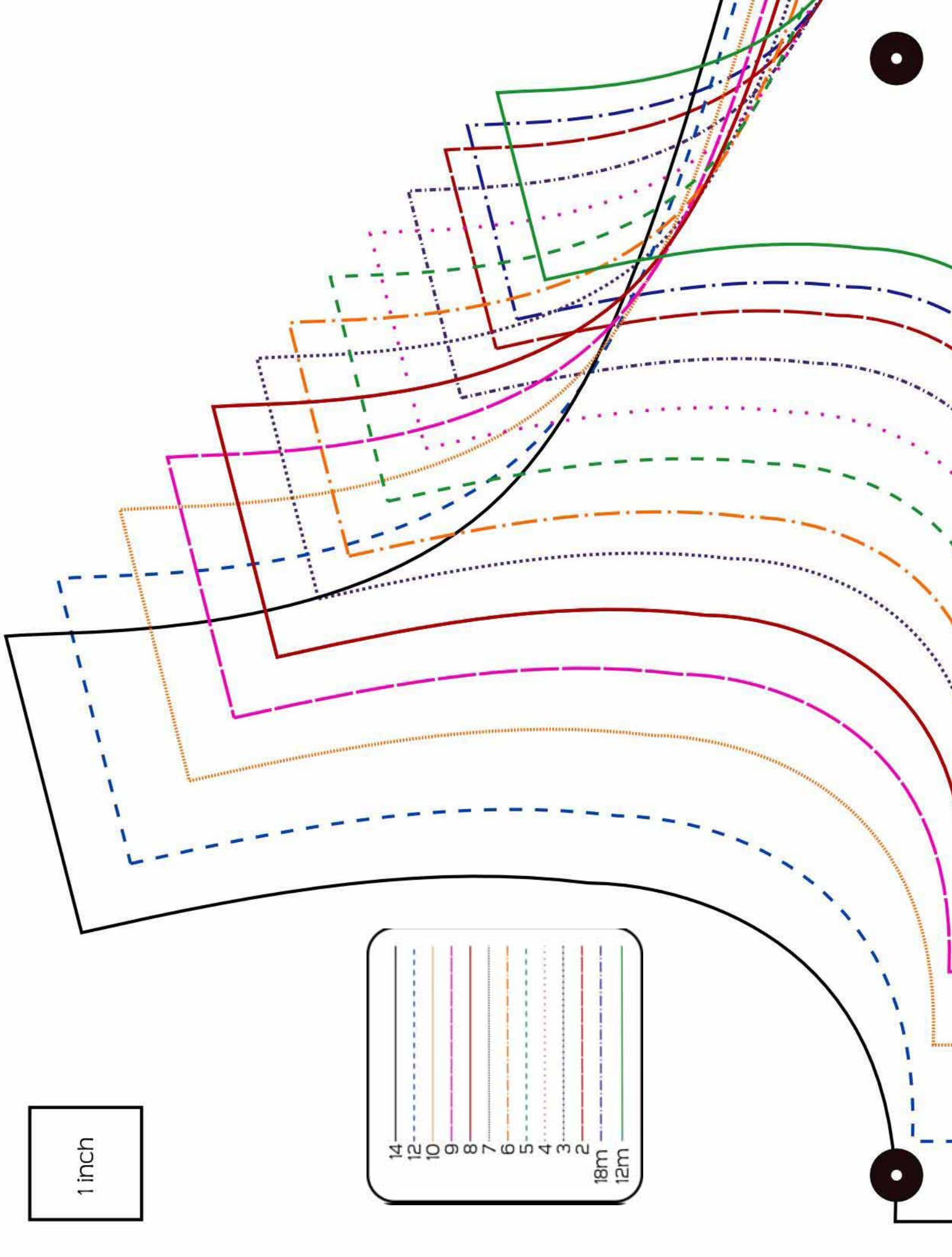
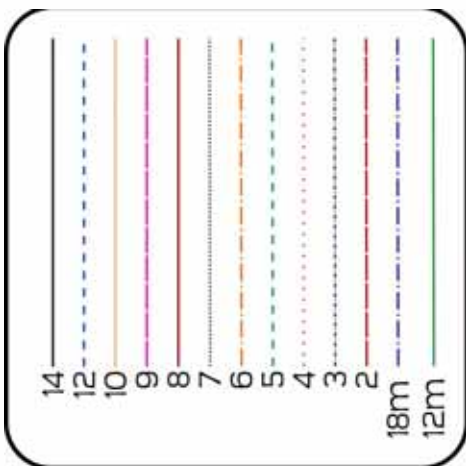
Goodwill Sewing

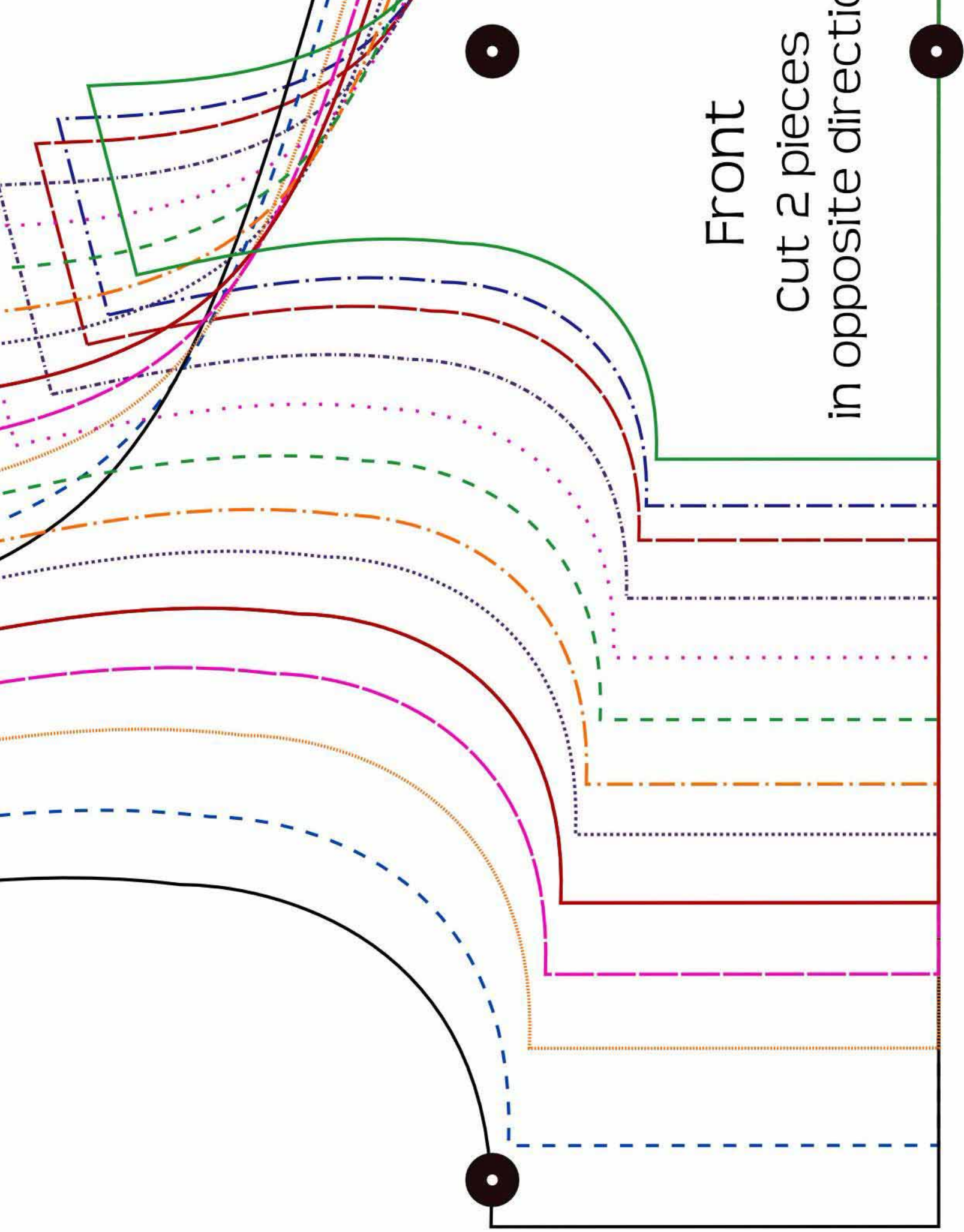
Please note that pattern is geared towards charitable sewing and as such I ask that garments made with this pattern not be sold for profit <3





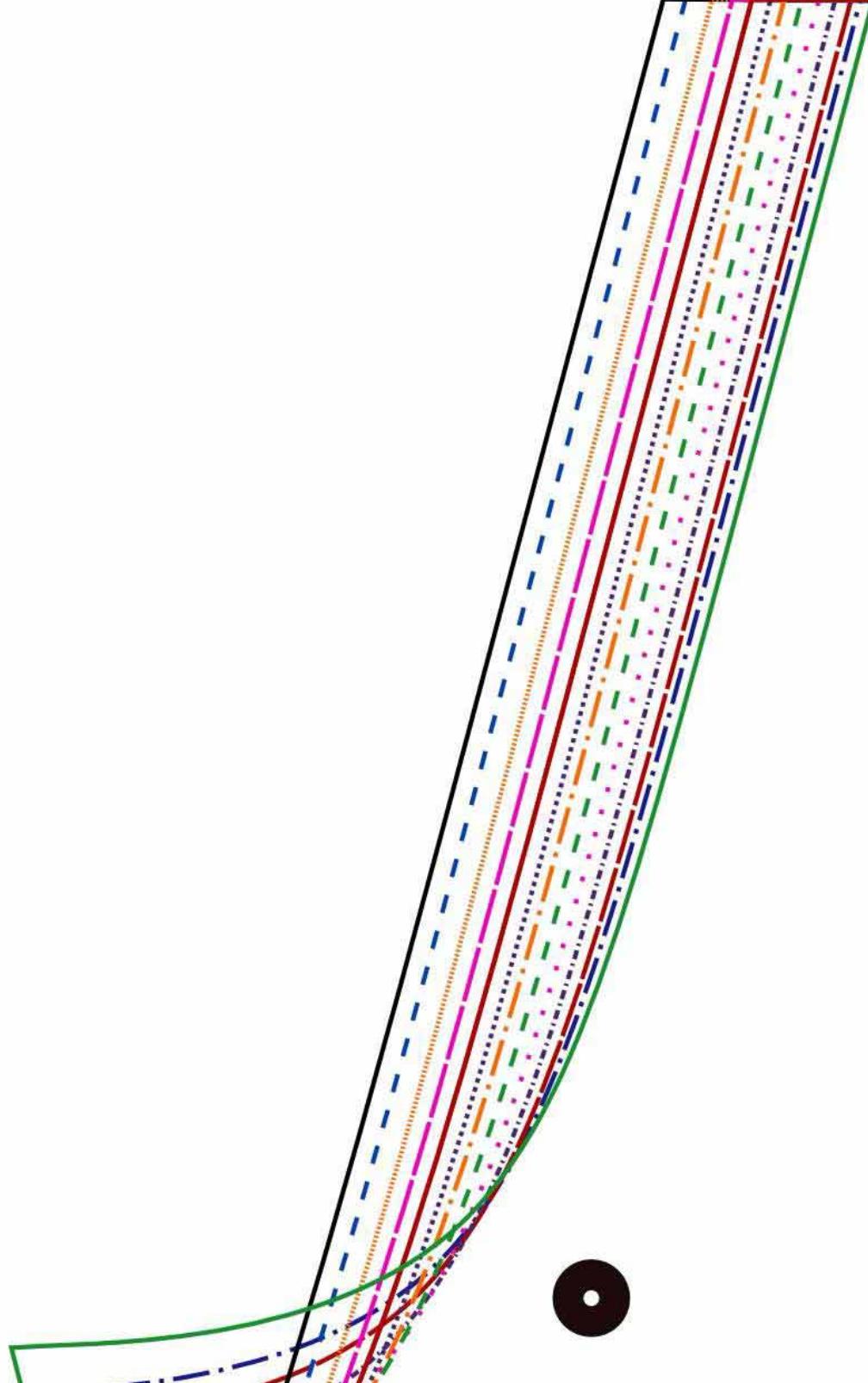
1 inch

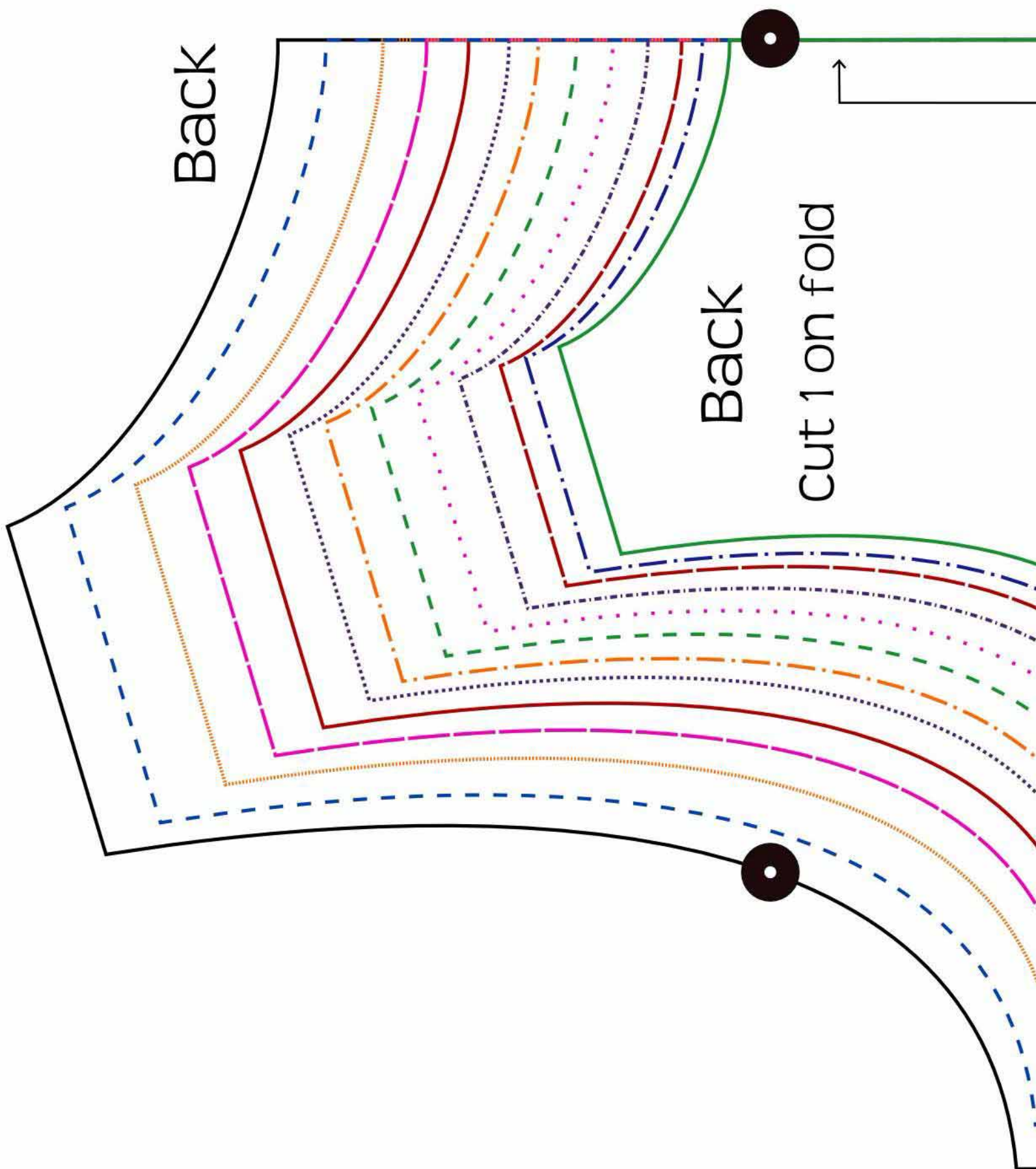


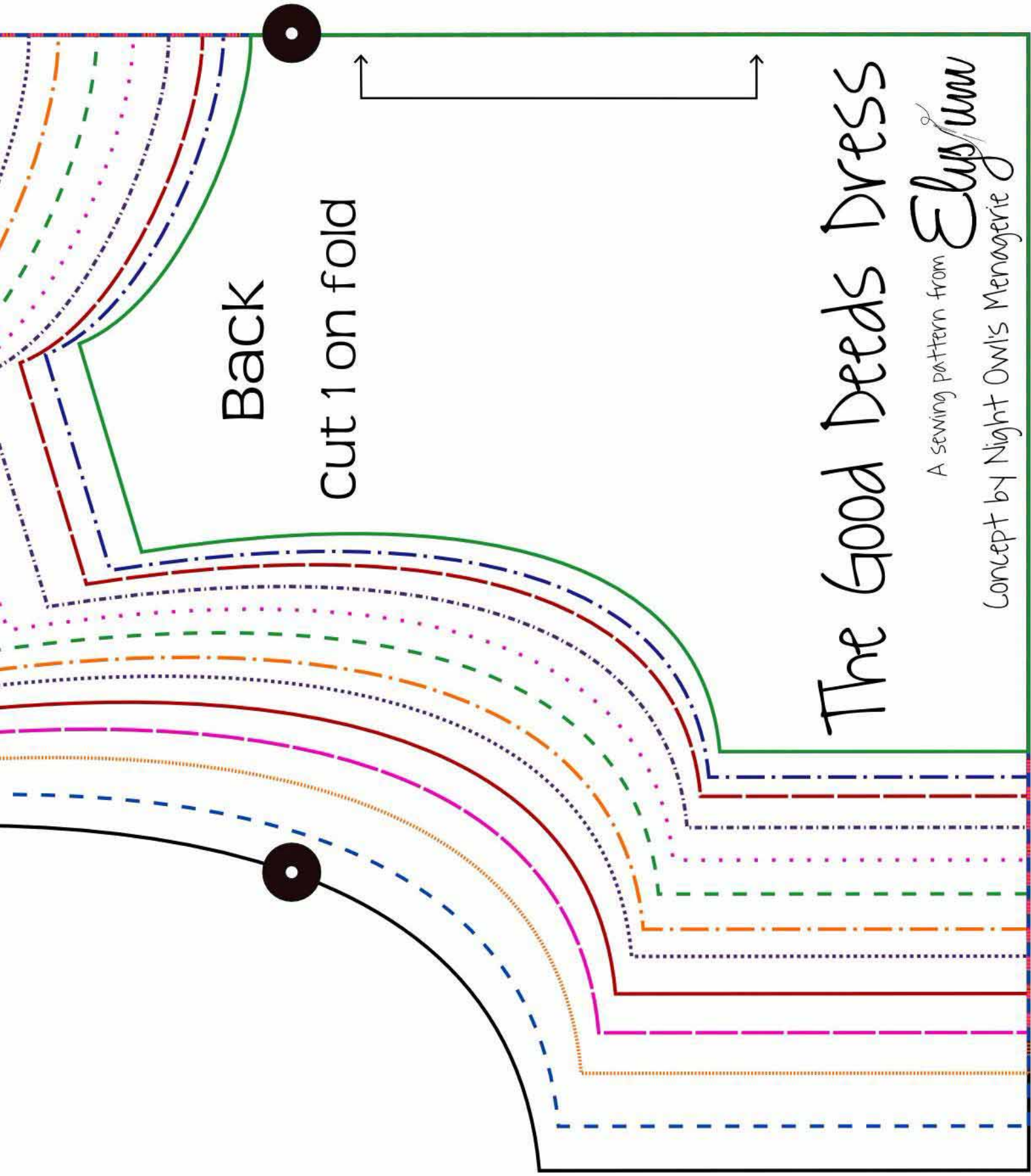


The Good Deeds Dress

A sewing pattern from *Elysium*
Concept by Night Owl's Menagerie







Back

cut 1 on fold

The Good Deeds Dress

A sewing pattern from *Elysium*
Concept by Night Owl's Menagerie